



Specifications

Dialogue model

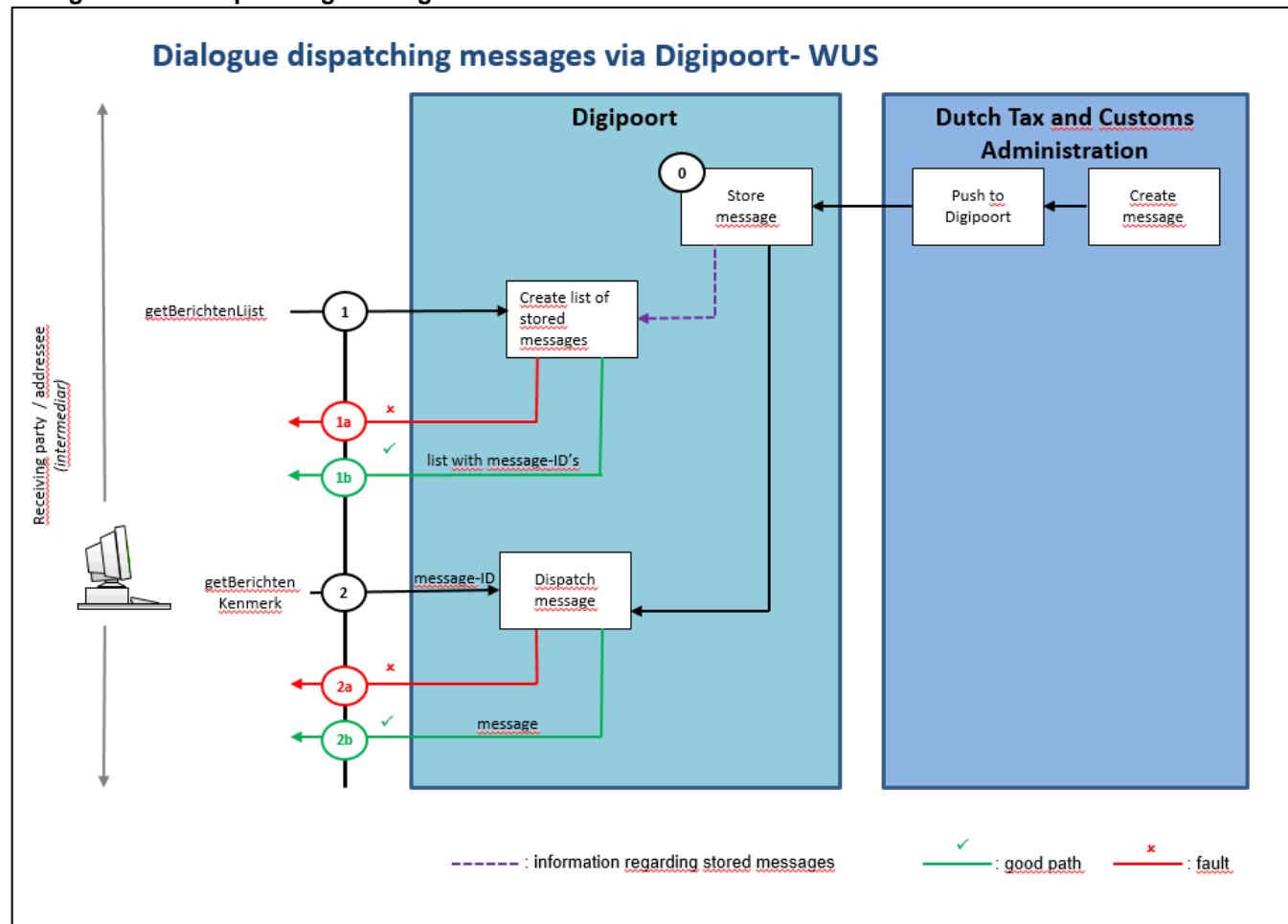
Dialogue dispatching messages via Digipoort - WUS

2 March 2023

Version 1.1

This document describes the dialogue necessary for retrieving messages from Digipoort using the WUS-interface. The (technical) messages used in the system-to-system dialogue are named conform the technical WUS-specifications.

Dialogue model Dispatching messages



Explanation

0. Messages created by the Dutch Tax and Customs Administration are stored at Digipoort.
1. The software of the addressee sends a `getBerichtenLijstRequest` to Digipoort via the Ophaalservice, thus requesting for a list of stored messages.
 - 1a. When problems occur during the processing of the request, Digipoort will return an `ophaalFault` to the addressee.
 - 1b. Based on the `getBerichtenLijstRequest` Digipoort creates a list with stored messages. This list will be offered to the addressee via a `getBerichtenLijstResponse`. The list contains a unique message-ID (kenmerk) per stored message. If no messages are stored the `getBerichtenLijstResponse` will not contain any message-ID's.
2. For each individual message the software of the addressee sends a `getBerichtenKenmerkRequest` to Digipoort via the Ophaalservice. The request must contain the message-ID (kenmerk) that has been provided earlier by Digipoort (within 1b)
 - 2a. When problems occur during the processing of the request, Digipoort will return an `ophaalFault` to the addressee.
 - 2b. Based on the message-ID mentioned in the `getBerichtenKenmerkRequest` Digipoort creates a `getBerichtenKenmerkResponse` containing the message.

Version history

Version	Date	Description
1.0	07-11-2016	Initial version
1.1	02-03-2023	More generic, Removal of terms like SBR and DWT

Explanation of abbreviations used

WUS	<p>One of the standards for messages between the business community and government. It is an acronym for WSDL, UDDI and SOAP).</p> <p><i>WSDL</i> = Web Service Definition Language; an XML language for the specification of interfaces between webservices.</p> <p><i>UDDI</i> = Universal Description, Discovery and Integration; a register based on XML that businesses can use to present their webservices.</p> <p><i>SOAP</i> = Simple Object Access Protocol; a protocol for the specification of a message structure. The message consists of an envelope containing a header and the body.</p>
-----	---